



RESOURCES OF DIVYANGJAN

Physical facilities (Yes/ No)	Provision for lift (Yes/ No)	Ramp/ Rails (Yes/ No)	Braille Software/ facilities (Yes/ No)	Rest Rooms (Yes/ No)	Scribes for examination (Yes/ No)	Special skill development for differently abled students (Yes/ No)	Any other similar facility
Yes	(Lift & Escalator) Yes	Yes	Yes	Yes	No	No	Wheel Chair as transportation aid for Physically Challenged Students for movement in Campus



DIFFERENTLY ABLED (DIVYANGJAN) FRIENDLINESS RESOURCE

The Amity University Haryana gives special attention to the needs and aspirations of the differently-able (Divyang) students with focus to their complete integration into functioning and output of university. Several physical infrastructures as well as friendly environment has been created for their efficient participation to learning and pan-academic activities. Following provisions are made for them:

Ramps: University buildings has been designed to integrate provision of ramps for hassle free and dignified movement of divyang students across all its building including hostels, mess, academic complex, sports ground and premises including faculty residences and library as well. To ensure safety during movement all stairways, steps and ramps have railings.

Toilets: There are separate toilets in all building and premices which are designed to be disabled friendly to cater need of the divyangs. They have broad door (1- 1.2m wide) and also have grab bars.

Lift /elevator: To ensure hassle free movement across multi-storey buildings, fully equipped elevator facility is available across all buildings. A special team is dedicated for operation and maintenance and to ensure safety for all elevators on 24*7 basis in the line of fire safety team. The number and location of elevators are fixed based upon footfall.

Wheelchairs: Wheelchairs availability is ensured in medical room as well as where it is required to cater need of emergency situation. Corridors are broad i.e., wheelchair enabled (width 1 to 1.5 m). Door width is suitable for wheelchair users in toilets and classrooms.

Scribes: University provides scribes facility on merit basis during examination as per university regulations to all bonafied cases as per request.

Braille facilities: University provides Braille facilities for Divyang students for hassle-free learning in the University

Medical Centre: The University has a well-equipped medical room with provision of qualified doctor, nurse and nursing assistants on 24*7 basis to cater medical need of university including divyangs. Apart from Medical centres special clinical centres for eye & vision, language and speech and psychological counselling are fully functional to add friendless to students in general and Divyang students in particular.

Signages: Adequate signages on the campus are placed at appropriate location which uses fluorescent colours for low vision persons. All laboratories, Central Instrumentation Facility (CIF) and elevators has proper printed display of DOs and DON'T in case of any emergency with list of contact numbers. All appropriate places including hostel, library and academic complex has display of Anti Ranging posters with contact number of Anti Ranging Committee and 24*7 helpline numbers for immediate reporting.

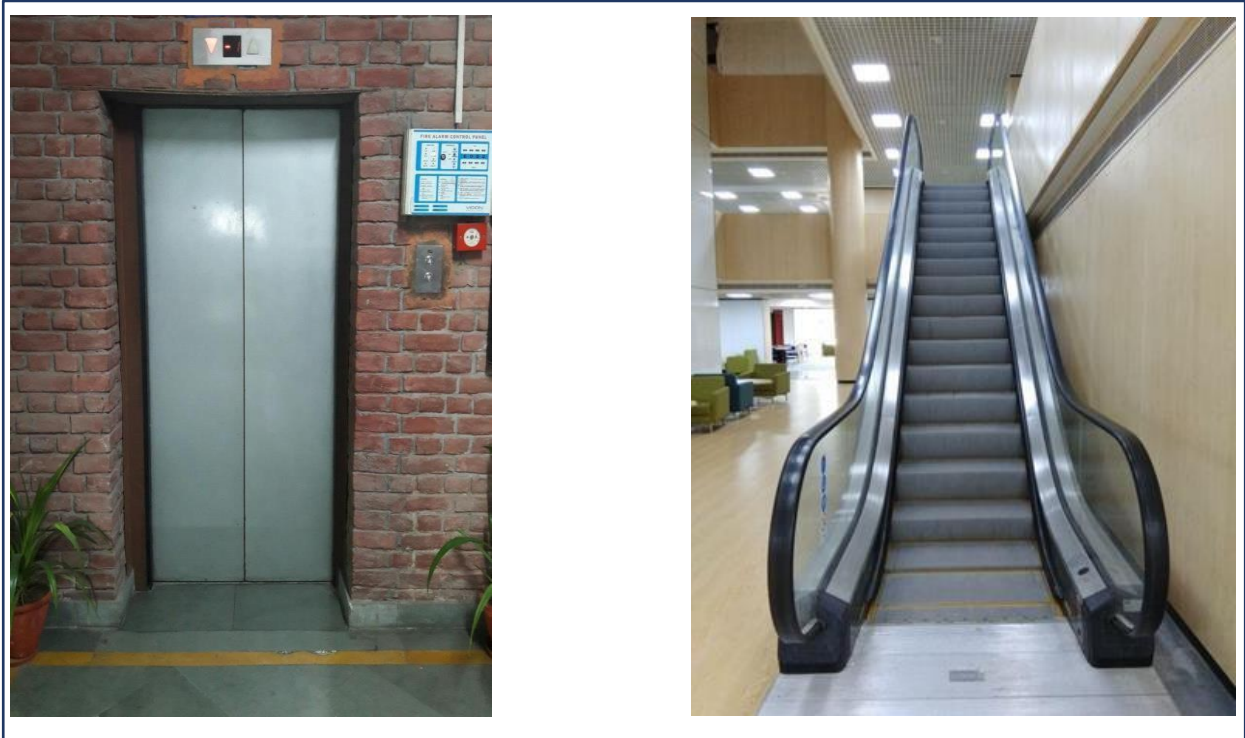


FIG: PROVISION OF LIFT AND ELEVATORS

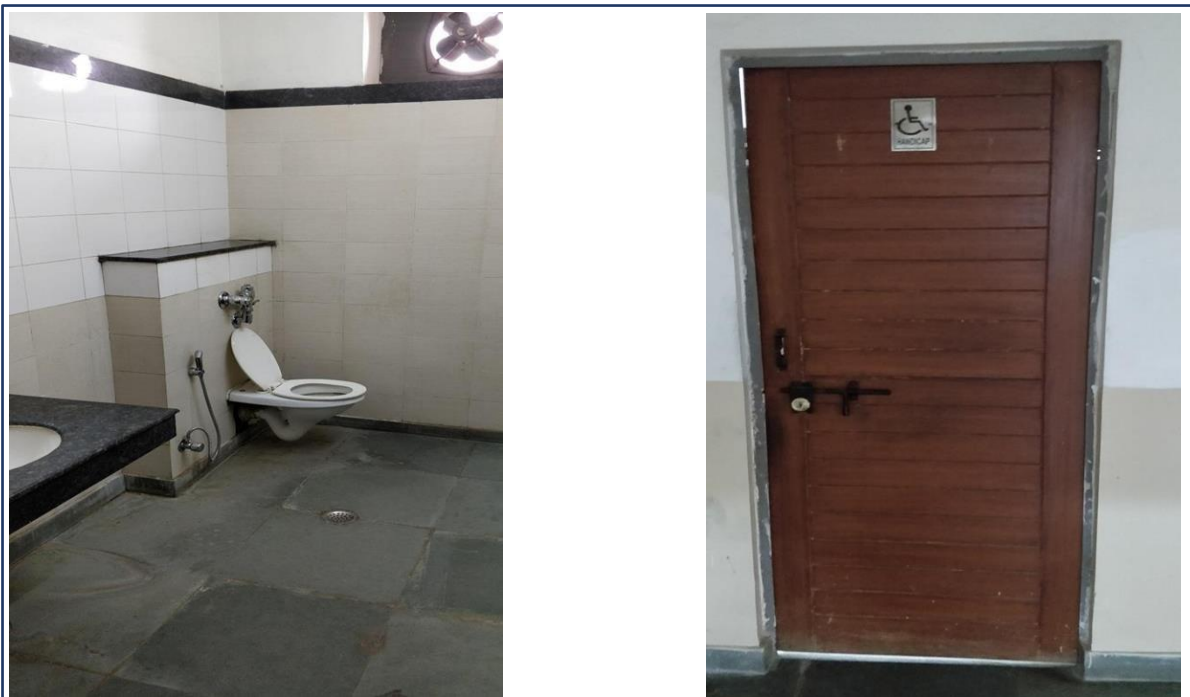


FIG: DIVYANG FRIENDLY TOILETS

FIG: PROVISION OF RAMPS AND WHEELCHAIRS

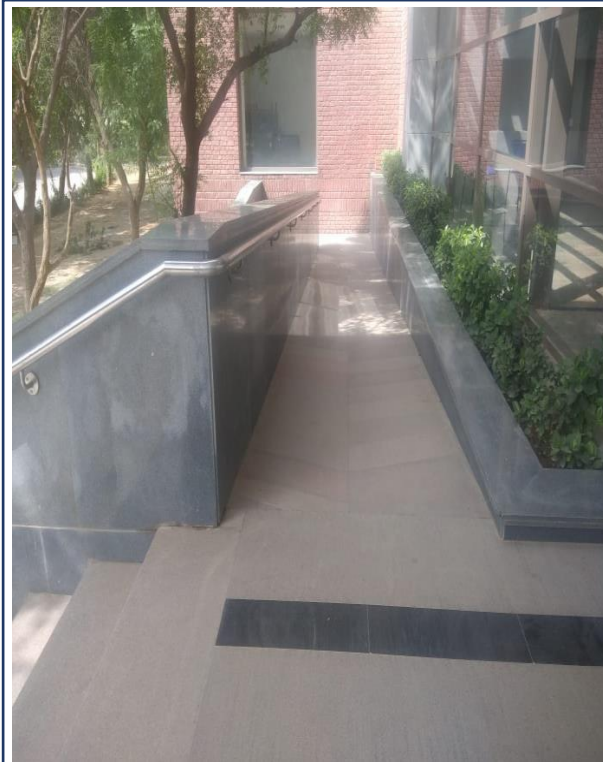
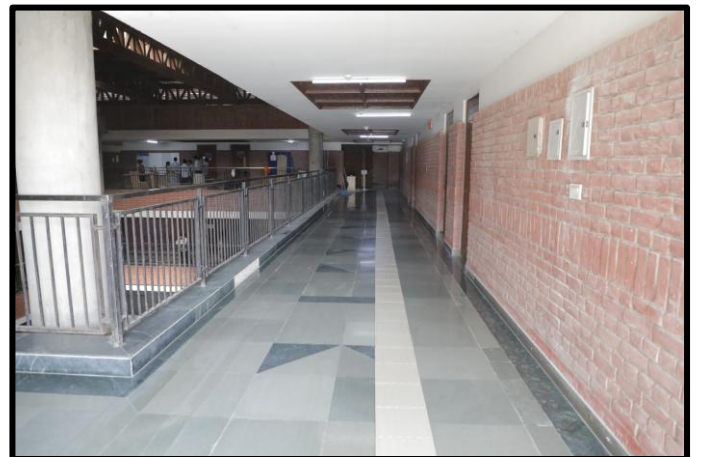




FIG: PROVISION OF DIRECTIONAL BLOCK TACTILE PAVING





AMITY UNIVERSITY
HARYANA
