



# AMITY UNIVERSITY HARYANA

**15.2.4- Educational programmes on ecosystems**

**Evidence No. 1- Herbal Garden**

A handwritten signature in blue ink, appearing to read "M. S. Singh", is written over a faint rectangular stamp.

Registrar  
Amity University Haryana  
Manesar Gurgaon-122413

## **BIODIVERSITY OF AMITY UNIVERSITY**

### **GRURGAON, HARYANA**

Aravalli range is one of the oldest mountains in the world known as the museum of minerals are now under existential threat due to rapid land use transformation to meet the need of development. Picturesque landscapes are being fast converted into industrial, educational and commercial hubs by compromising on their natural setting and ecological balance.

Amity University Haryana, a lush green oasis in this zone is an exception as it has adopted 'Nature-Just Development' having modern infrastructure supported by a strong natural ecological landscape. The rich flora and fauna at the campus imparts it a calm serenity and positivity making it an ideal setting to acquire knowledge and foster innovation, creativity and research. The colorful birds, peacocks and butterflies add to the vibrant and happy environment which is the hallmark of Amity University. Birds and Butterflies are not just a colorful creation but also are a bio-indicator of the ecological well-being as they are dependent on native vegetation and resources. In the era of man induced climate change, birds and butterflies are changing their behavioral and physiological pattern Even local birds like house sparrow and eagle have shown a rapid decline in their number.

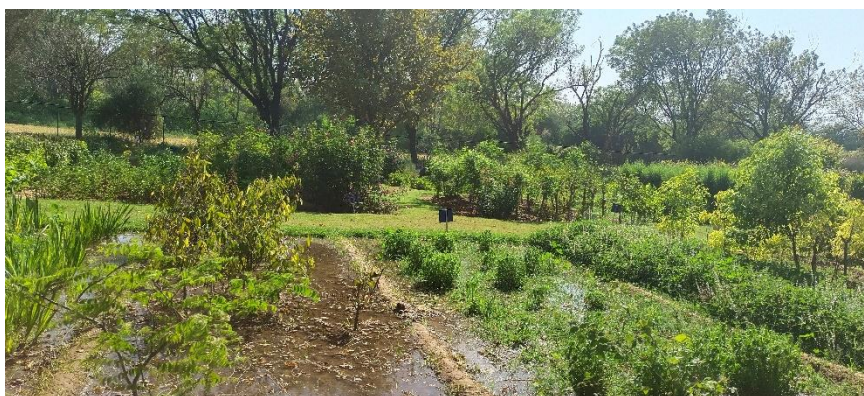
On-campus 5acre herbal garden is a rich resource for advanced research in the field of Medicinal Plants. The herbal garden is treated as a field laboratory for creating awareness amongst students and visitors.

Here Herbal Garden is a separate space in garden devoted to growing a specific group of plants known as herbs. In our herbal Garden there is combination of ornamental and medicinal plants which we used for research and demonstration purpose.

It also plays important role in biodiversity conservation, commercial cultivation of medicinal & aromatic plants, production of quality planting material, processing & value addition, education, product development, capacity building, education and consultancy, marketing, database and publications.



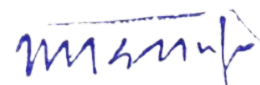
Registrar  
Amity University Haryana  
Manesar Gurgaon-122413



Ser No	Species	
	Local Name	Botanical Name
1	Aloe vera	<i>Aloe vera</i>
2	Brahmi	<i>Bacopa monnieri</i>
3	Bach	<i>Acorus calamus</i>
4	Stevia	<i>Stevia rebaudiana</i>
5	Kalmegh	<i>Andrographis paniculata</i>
6	Kala Bansa	<i>Barleria cristata</i> L.
7	Pila Bansa	<i>Barleria prionitis</i>
8	Giloy	<i>Tinospora cordifolia</i>
9	Haldi (Turmeric)	<i>Curcuma longa</i>
10	Touch me Not (Lajwanti)	<i>Mimosa pudica</i>
11	Ram Tulsi	<i>Ocimum tenuiflorum</i>
12	Elaichi	<i>Amomum lettaria</i>
13	Hadjod	<i>Cissus quadrangularis</i>
14	Latjeera	<i>Achyranthes aspera</i>
15	Senna	<i>Senna auriculata</i>
16	Jatropha	<a href="#">Jatropha cuneata</a>
17	Ashwagandha	<i>Withania somnifera</i>
18	Sarpagandha	<a href="#">Rauwolfia serpentina</a>
19	Lemongrass	<a href="#">Cymbopogon citratus</a>
20	Pipli (Long peeper)	<i>Piper longum</i>
21	Harad	<i>Terminalia chebula</i>
22	Bahera	<i>Terminalia bellirica</i>
23	Heena	<i>Lawsonia inermis</i>
24	Nirgudi	<i>Vitex negundo</i>
25	Neem	<i>Azadirachta indica</i>

  
 Registrar  
 Amity University Haryana  
 Manesar Gurgaon-122413

26	Gambhari	<i>Gmelina arborea</i>
27	Harsingar	<i>Nyctanthes arbor-tristis</i>
28	Anantmool	<i>Hemidesmus indicus</i>
29	Adusa	<i>Justicia adhatoda</i>
30	Sarpunkha	<i>Tephrosia purpurea</i>
31	Guggul	<i>Commiphora wightii</i>
32	Chitrak	<a href="#">Plumbago auriculata</a>
33	Shatavari	<i>Asparagus racemosus</i>
34	Ishabagol	<i>Plantago</i>
35	Coleus Forskohlii	<i>Plectranthus barbatus</i>
36	Sinduri	<i>Bixa orellana</i>
37	Ashoka	<i>Polyalthia longifolia</i>
38	Bael	<i>Aegle marmelos</i>
39	Aonla	<i>Phyllanthus emblica</i>
40	Moringa	<i>Moringa oleifera</i>
41	Arjuna	<i>Terminalia arjuna</i>
42	Curry Tree	<i>Murraya koenigii</i>
43	Jasmine	<i>Jasminum l</i>
44	Chandni	<i>Tabernaemontana divaricata</i>
45	Bhringraj	<i>Eclipta rostrate</i>
46	Goolar	<i>Ficus racemosa</i>
47	Sadabahar	<a href="#">Catharanthus roseus</a>
48	Bhumi Amla	<i>Phyllanthus niruri</i>
49	Ajwain	<i>Trachyspermum ammi</i>
50	Mint	<a href="#">Mentha longifolia</a>
51	Jamun	<i>Syzygium cumini</i>
52	Ginger	<i>Zingiber officinale</i>
53	Rose	<i>Rosa indica</i>
54	Papaya	<i>Carica papaya</i>
55	Gokhru	<i>Tribulus terrestris</i>
56	Ajuba (Pattar Chatta)	<i>Bryophyllum pinnatum</i>
57	European elderberry	<i>Sambucus nigra</i>
58	Palmarosa	<i>Cymbopogon martinii</i>
59	Motha	<i>Cyperus rotundus</i>
60	Babul	<i>Vachellia nilotica</i>
61	Shyam Tulsi	<i>Ocimum sanctum</i>
62	Castor (arandi)	<i>Ricinus communis</i>
63	Kapur Tulsi	<i>Ocimum tenuiflorum</i>
64	Mandukparni	<i>Centilla acitica</i>
65	Thyme Tulsi	<i>Ocimum tenuiflorum</i>
66	Almond	<i>Prunus dulcis</i>



Registrar  
Amity University Haryana  
Manesar Gurgaon-122413

67	Amaltas	<i>Cassia fistula</i>
68	Gurhal	<i>Hibiscus rosa sinesis</i>
69	Custardapple	<i>Annona reticulata</i>
70	Anar ( <i>Pomogranate</i> )	<i>Punica granatum</i>
71	Grapes	<i>Vitis vinifera</i>
72	Snake plant	<i>Sansevieria trifasciata</i>
73	Tejpatta	<i>Cinnamomum tamala</i>
74	Guava	<i>Psidium guajava</i>
75	Champa	<i>Magnolia champaca</i>
76	Dudhi	<i>Euphorbia hirta</i>
77	Nagdon	<i>Euphorbia tithimaloides</i>
78	Imli	<i>Tamarindus indica</i>
79	Cactus	<i>Opuntia ficus indica</i>
80	Kamphor	<i>Cinnamon</i>
81	Dalchino	<i>Cinnamon dalchino</i>
82	Sandalwood	<i>Santalum paniculatum</i>
82	Rudraksha	<i>Elaeocarpus ganitreus</i>
84	Kalpavriksha	<i>Adansonia digitata</i>



We also use here techniques like -

**VERMICOMPOSTING - the process by which worms are used to convert organic materials (usually wastes) into a humus-like material known as vermin-compost.**

It prepares in approx. 50-60 days then we used it as a fertilizer for plants of herbal garden

  
 Registrar  
 Amity University Haryana  
 Manesar Gurgaon-122413





**GREEN HOUSE** - Here it is Net framed structure that is used for **the production of fruits, vegetables, flowers, and any other plants that require special conditions of temperature.**



To increase the value and amount of greenery in campus we used to make a plantation drive time to time in which we plant different species and max number. Last drive was conducted in Aug 15-Aug 27 in which approx. 1000 plants were planted.



In addition to this we have drought resistance plants they have the ability to survive drought conditions, Some plants are naturally drought resistance and other develop themselves into one due to their hybrid nature or need of survival for example crops like corn, wheat, and rice.

Registrar  
Amity University Haryana  
Manesar Gurgaon-122413

## List of Drought Resistance Plants –

- Includes drought resistance trees
- Drought resistance shrubs
- Drought resistance ground covers
- Drought resistance ornamental grasses

- Mango
- Falsa
- Date
- Karunja (Roundberry)
- Guava
- Bail
- Loquat
- Lavender
- Pear Cactus
- Cactus
- Alvera
- Fig (Pepal , Anjir )
- Grapes
- Lantana
- Sage
- Bougainvillea
- Kei apple
- Salvia
- Catmint



We also performed Agriculture training time to time to maintain our crops medicinal plants and to upgrade our skills to maintain them .

  
Registrar  
Amity University Haryana  
Manesar Gurgaon-122413

Recently we conducted a farming training program to explain our method of farming and cultivation of crops .



  
Registrar  
Amity University Haryana  
Manesar Gurgaon-122413