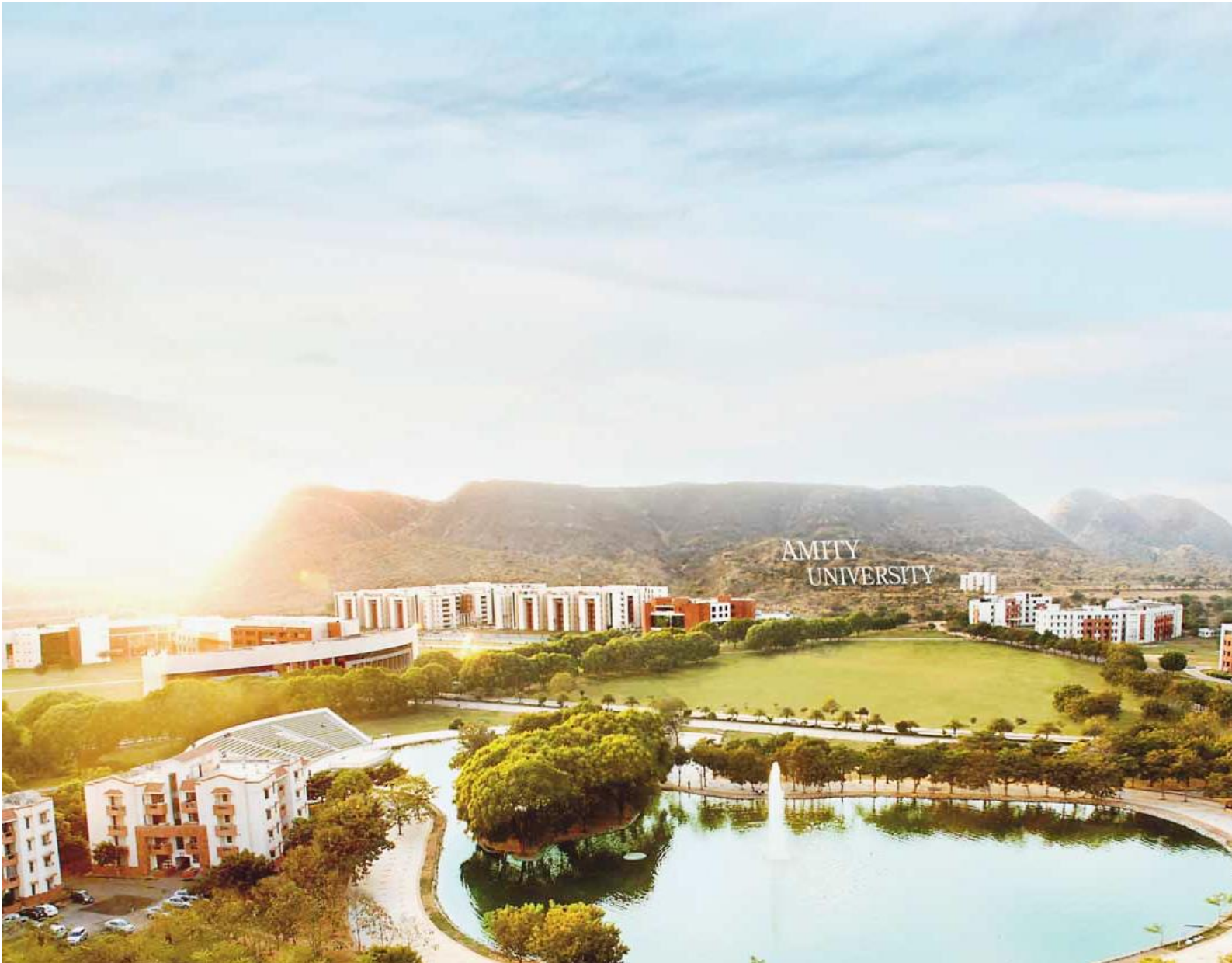




CRITERION IV - INFRASTRUCTURE AND LEARNING RESOURCES (100)

KEY INDICATOR - 4.4
MAINTENANCE OF CAMPUS
INFRASTRUCTURE

**KEY INDICATOR:4.4.2:
MAINTENANCE AND UTILIZATION OF
PHYSICAL,ACADEMIC AND SUPPORT
FACILITIES INFRASTRUCTURE**



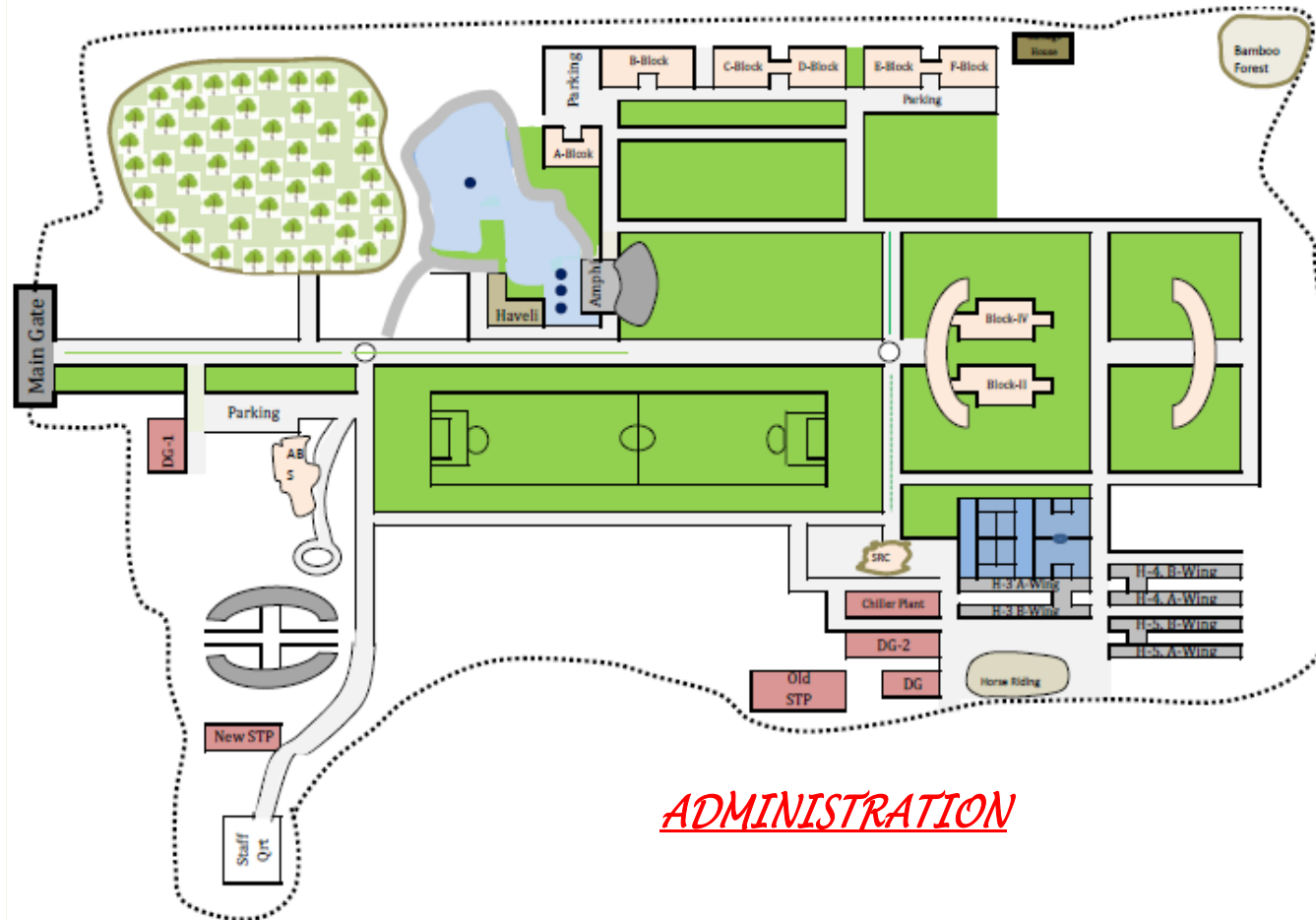
Amity University Overview

- AMITY UNIVERSITY RAJASTHAN HAS A TOTAL AREA OF 152 ACRES AND A BUILT-UP AREA OF 12,71,261 SQ FT.

THE CAMPUS IS SITUATED AT A DISTANCE OF APPROX. 40 KMS FROM THE CITY.

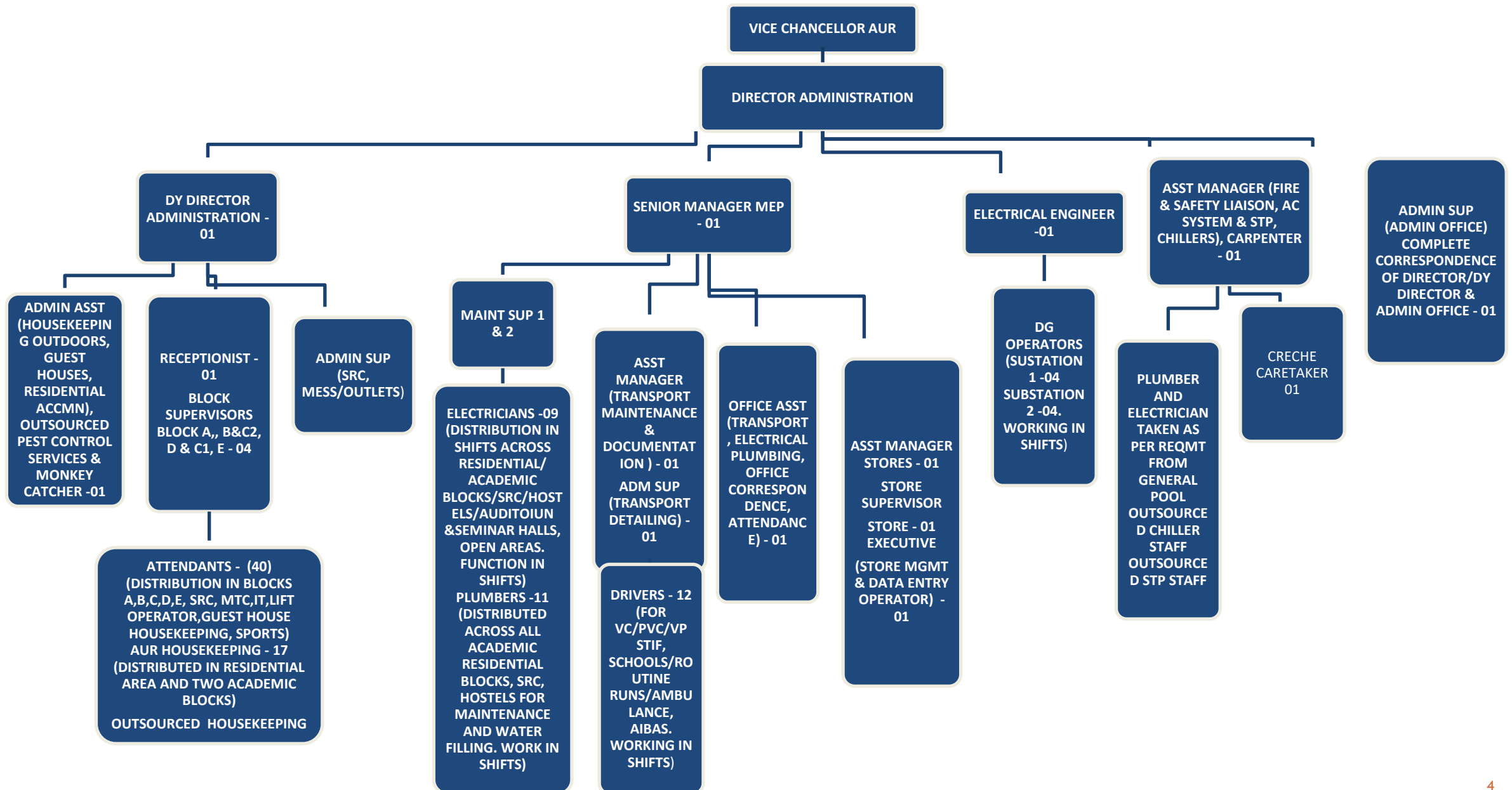
AMITY UNIVERSITY RAJASTHAN

- University has an Estate Office for ensuring regular maintenance of buildings, class rooms, laboratories, surrounding landscape, etc.
- In addition, the University has also appointed a Civil Engineer as Project Officer along with a team of 3 supervisors, to ensure quality control of ongoing constructions and maintenance of existing infrastructure.
- Director Administration and his team of 3 Deputy Directors, 1 Electrical Engineer, 8 Administration Assistants & Supervisors along with 127 manpower (Housekeeping/ Sweepers/ Electricians/ Plumbers/ Carpenters/ Gardeners etc.) are responsible for maintenance and upkeep of infrastructure facilities & services, gardens, lawns and other horticulture activities.
- Director Administration oversees the routine maintenance activities related to electricity units, electrical supply, elevators, generators, water purifiers, watercoolers, air conditioning, water supply, and horticulture.



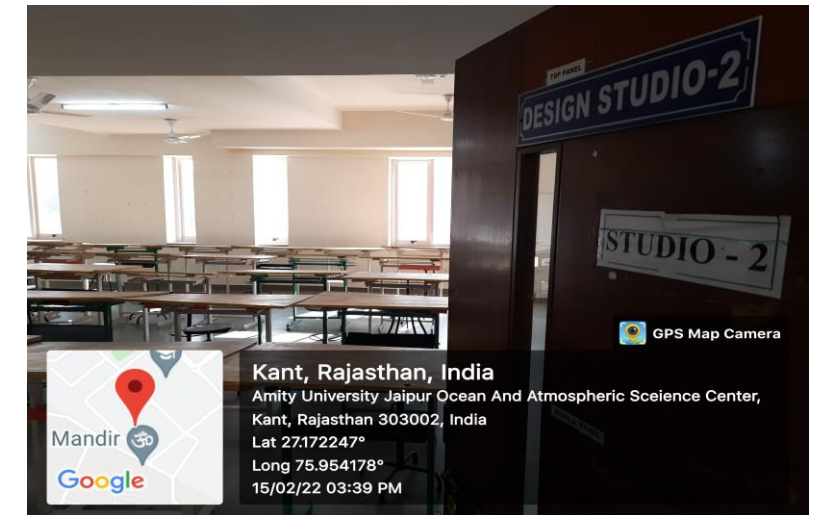
ADMINISTRATION

4.4.2 Administration organogram



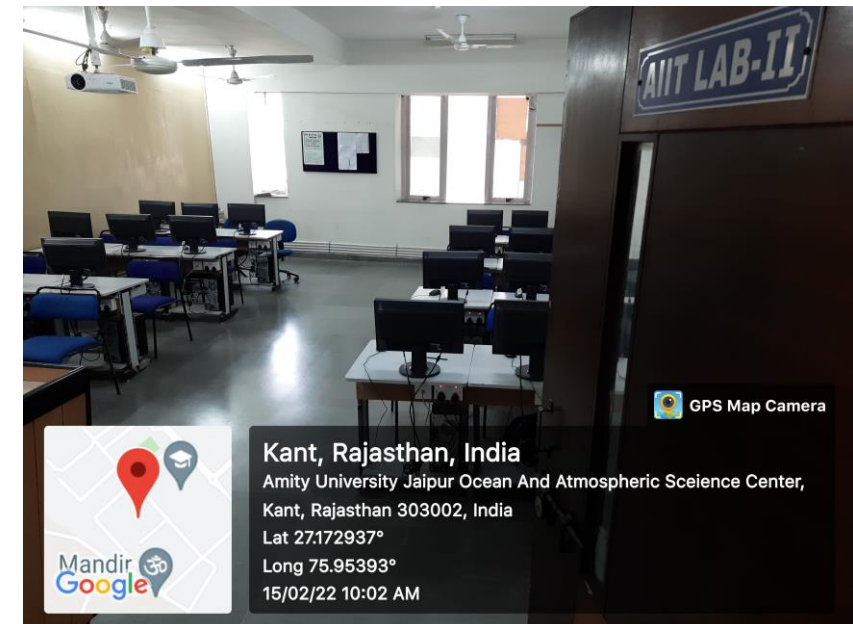
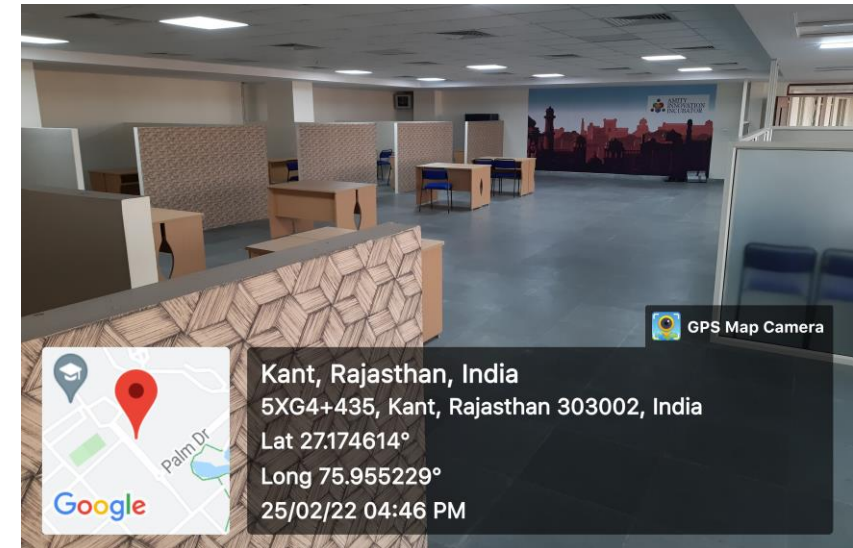
INFRASTRUCTURE: MAINTENANCE OF ACADEMIC BLOCKS

- There are total Six Academic blocks including SRC building. Each block has a Supervisor to look after the upkeep of the building. Deputy Director Admin oversees the maintenance .All the records of maintenance have been maintained.
- 6 Academic Blocks housing 15 Departments their Classrooms (CRs), Lecture Theatres (LTs), Labs and Administrative Offices
- Central AC in all places
- Water coolers with Aqua Guards fitted in all areas
- Standby supply available in all places
- White Boards available
- Ample lighting facility
- LCD Projectors available in LTs, Seminar Halls and Auditorium



INFRASTRUCTURE: MAINTENANCE OF LABORATORIES

- The University has accorded AMC for all major laboratories and general use equipment. The laboratories equipment is maintained by the concerned lab technicians.
- All labs at AUR are air conditioned, AUSIC (Amity University Science and Instrumentation Centre), & departmental library remain open on weekend with 24x7 accessibility



INFRASTRUCTURE: MAINTENANCE OF IT

- **Manager IT along with the team of IT support oversees the maintenance of IT facilities**
- **IT Systems:**
- Amity University Rajasthan has centralized Wi-Fi network in the entire campus.
- At the top management level, we have Aruba Controller installed, which supports up to 20,000 active clients at a time. Wi-Fi APs are actively working in the whole campus for providing a better Wi-Fi network to the users throughout the year.
- Each user can connect up to 2 devices at a time.



INFRASTRUCTURE: MAINTENANCE OF SAFETY AND SECURITY

- **Director Security oversees the maintenance of Security facilities**
- **Security Systems:**
- Surveillance Cameras Recording. Total Number of cameras = 306 Nos.
- No user can connect with the Wi-Fi by any unauthorized means.
- Users/Guest has to complete the registration process in order to access Wi-Fi.
- Biometric Machine – 16 Nos.
- Vehicles Access Control System (Boom Barrier/Turnstile).
- Visitor management server



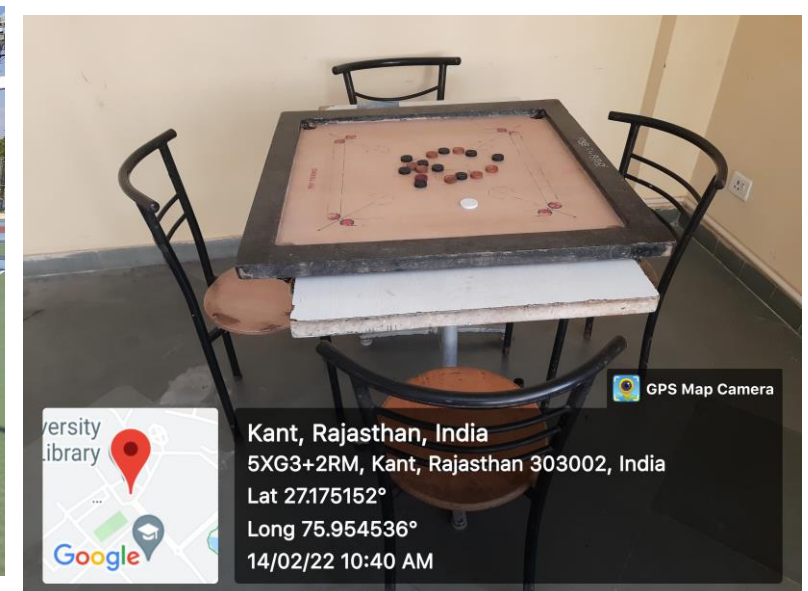
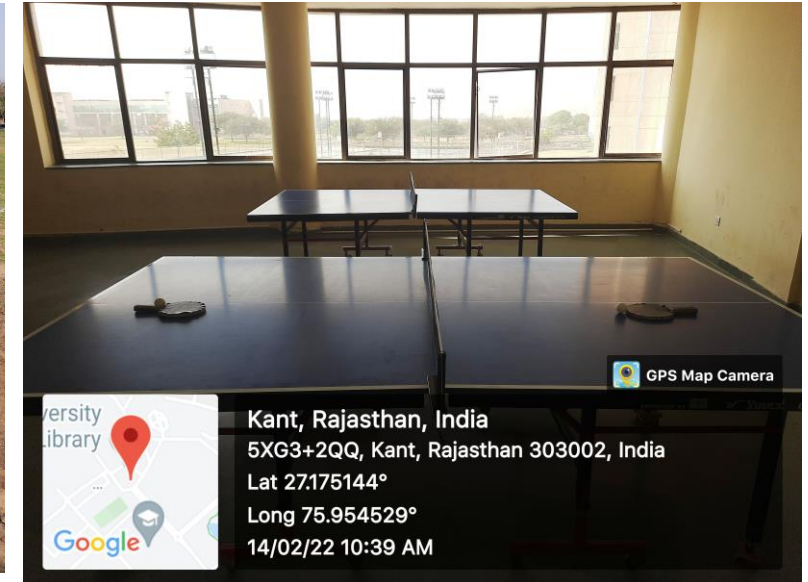
INFRASTRUCTURE: MAINTENANCE OF FACULTY RESIDENTIAL BLOCKS

- The general maintenance i.e. plumbing, electrical, carpentry, civil etc. are looked after by Administration department. All the technical staff maintains their records in logbook.
- A team of electricians, plumbers, DG operators and carpenter are available 24x7 to rectify the complaints.
- 12 Three bedroom and 101 two-bedroom apartments for married employees
- 48 Studio apartments for Bachelors' and Spinsters'
- 16 Single Room (Kitchen + Toilet Attached) and 32 Single Rooms Kitchen Attached) with common toilet, Apartments for Class IV Staff
- Faculty / Staff also accommodated in H1 & some H2 Hostel rooms on separate floor



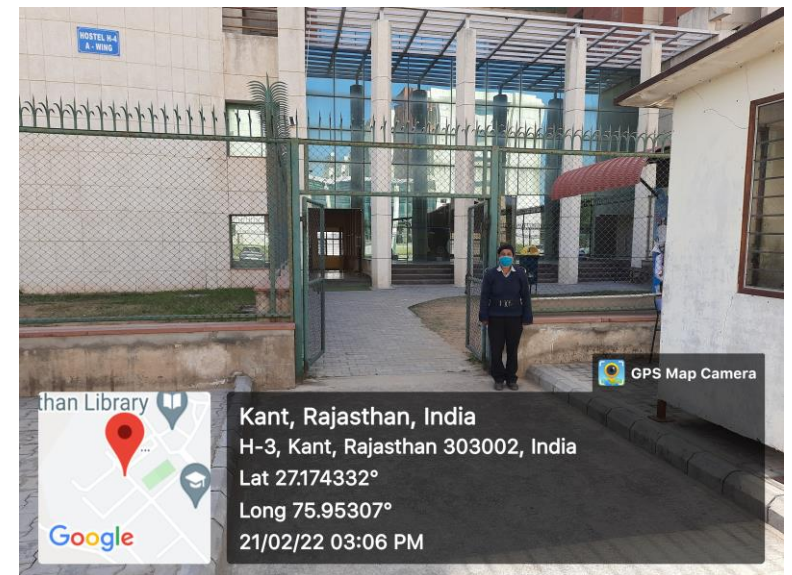
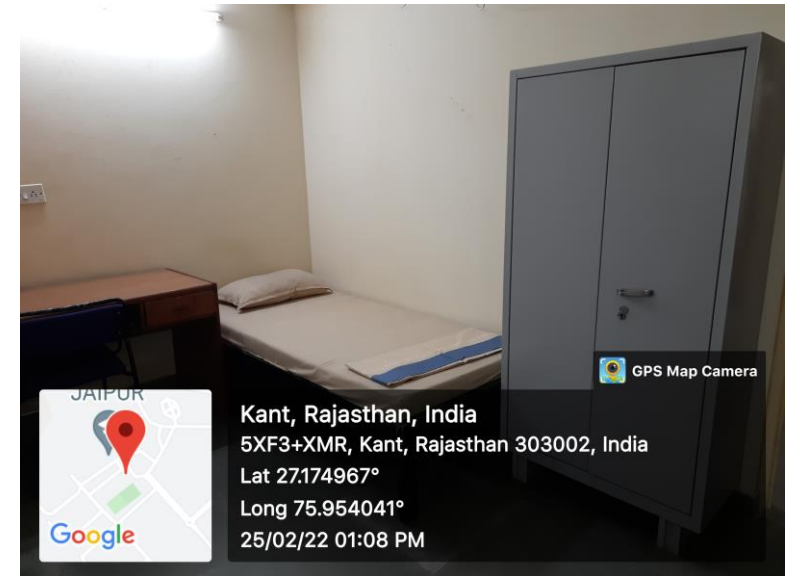
INFRASTRUCTURE: MAINTENANCE OF SPORTS & INDOOR FACILITIES:

- Ground men are available to maintain the sports ground and other sports facilities.
- Indoor sports facilities are maintained through Sports Officer.
- Outdoor s
- Indoor Sports Facilities
- Gymnasium
- Table Tennis in Resource Centre & Hostels
- Billiards & Pool
- Carrom & Chess
- Shooting Range in Block D
- Outdoor Sports Facilities
- Football – With Floodlights
- Lawn Tennis – With Floodlights Three Courts
- Basketball - With Floodlights
- Volleyball – With Lights Four Courts
- Badminton – With Lights Two Indoor and Two Outdoor
- Cricket Ground With Netted Practice Pitch
- Shooting
- Kabaddi Ground

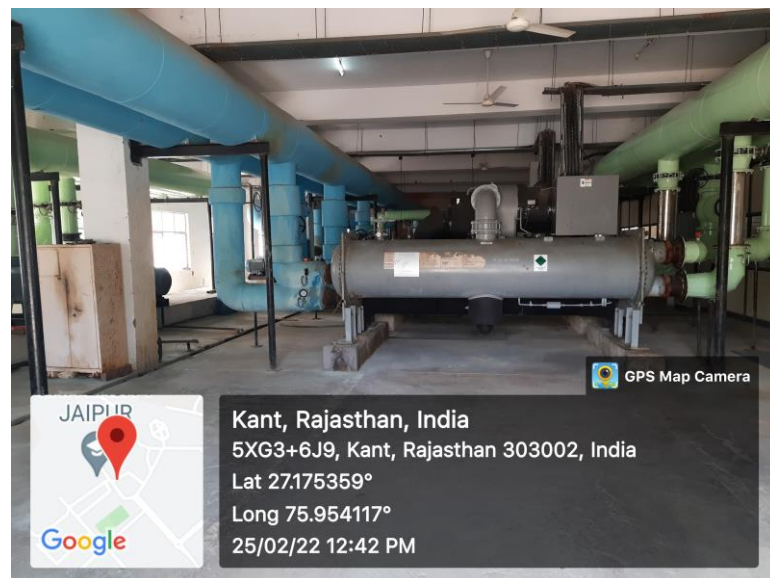
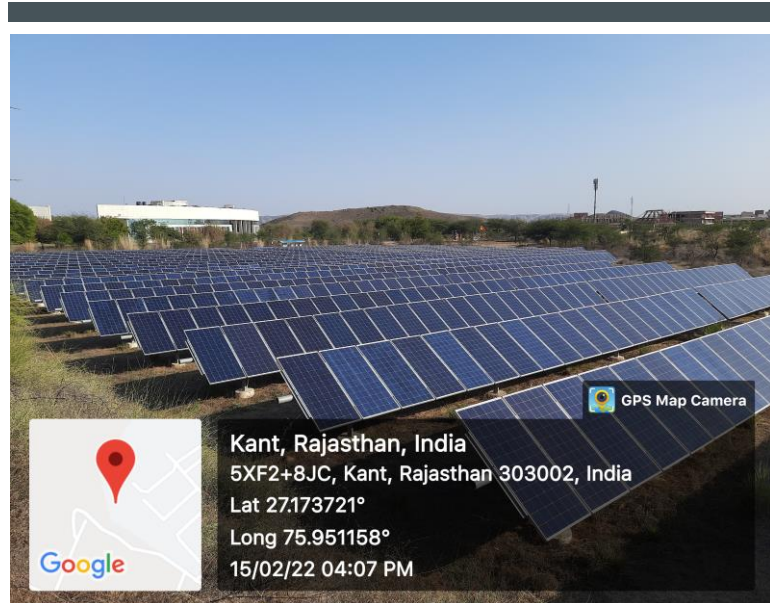


INFRASTRUCTURE: MAINTENANCE OF STUDENT HOSTEL BLOCKS

- **Deputy Director along with the team of Assistant Manager oversees the maintenance of hostel blocks.**
- Shared semi furnished rooms
- Fans available in each of the rooms and common areas
- Bathroom one per flat of 3 rooms. Toilet, washroom, basin separate
- TVs in Common Rooms
- Hostels are located within walking distance of academic blocks
- Water coolers with Aqua Guards fitted in all hostels
- One Director Hostel with 13 male wardens, 7 lady wardens & 19 Male/Female Attendants.
- Fire Fighting eqpt available in all hostels



INFRASTRUCTURE: MAINTENANCE OF UTILITIES FACILITIES

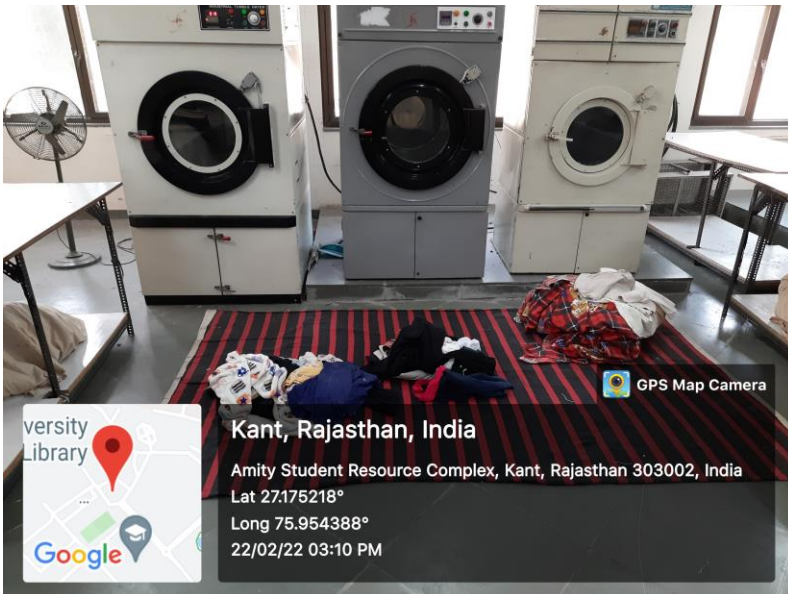
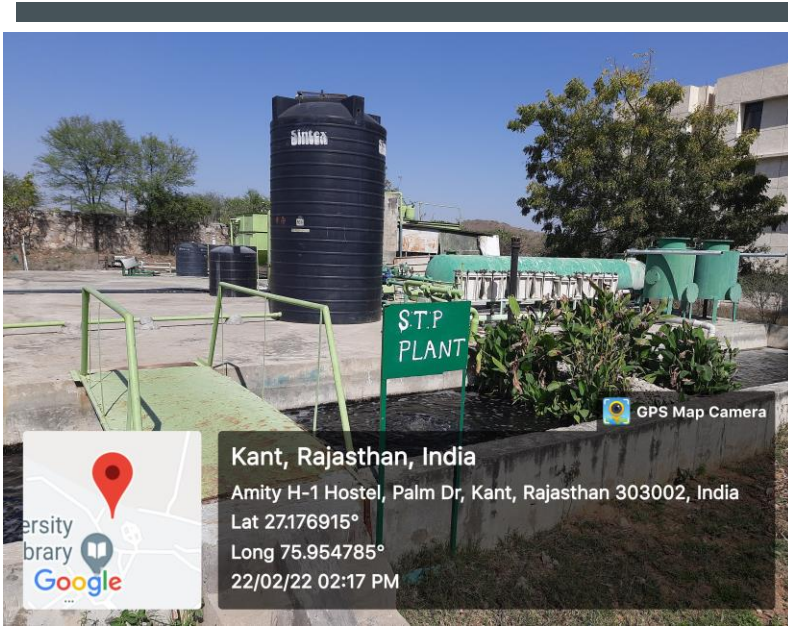


- **Director Administration oversees the routine maintenance activities related to electricity units, electrical supply, generators, air conditioning, water supply.**
- **The periodic maintenance of utilities is covered through annual maintenance contracts.**
- **Water Supply** Pumped through Bore Wells. Approx 6-7 lakh litres per day (LPD), depending on winter / summer, excluding horticulture requirement. Horticulture approx 6 lakh LPD through STP water.
- **Electricity Supply**
 - Two Electrical Substations. Released Load 2490 KW.
 - Peak load during summers 2400 KW. Minimum load approx 700 KW Nov and Feb.
 - **DG Supply** - Captive power generation 4700 KVA 9 DG sets
 - **Solar Generated Electrical Power** – Terrace and Ground Tracker System. Total Solar generation is of 995 MW per day, around 1/3rd of AUR requirement. Net metering is available to ensure excess solar generated electrical power is routed to JVVNL. This reduces monthly electricity bill.
 - **Air Conditioning Systems**
 - Centralised Air Conditioning
 - Chiller Plants – 3 chillers 600 tonnes each
 - Ductable ACs – 397 tonnes

INFRASTRUCTURE: MAINTENANCE IN GENERAL CAMPUS FACILITIES

- Deputy Director along with his team oversees the maintenance of general campus facilities.
- A team of electricians, plumbers, DG operators and carpenter are available 24x7 to rectify the complaints.

- **Water Coolers** 50 water coolers with aqua guards installed at vantage points in academic blocks, hostels and mess / food court area
- **AquaGuards** 160 installed with Water Coolers and in Residential Blocks
- **Sewage Treatment Plant**
 - 7.5 lakh litres per day (LPD) capacity
 - Treated water sent to artificial lake, from where utilized for Horticulture purposes
 - Treated water also used for Hostel flush system and Chiller Plant Cooling Towers
 - Treated water lake has fountains for aeration and carp fish have been put to , keeping it ecofriendly.
- **Housekeeping Facilities**
 - 90 outsourced and 17 inhouse staff available for routine housekeeping of all Academic Blocks and Hostels.
 - Free service provided in residential apartments.



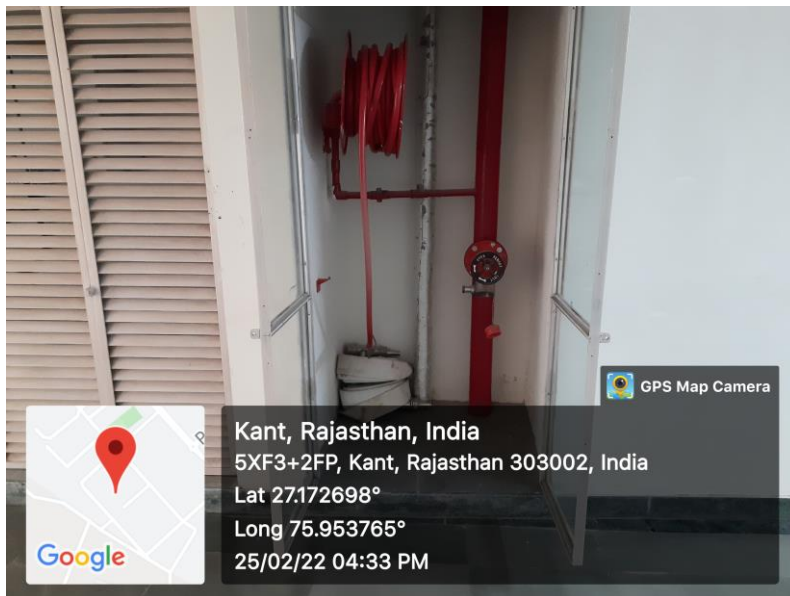
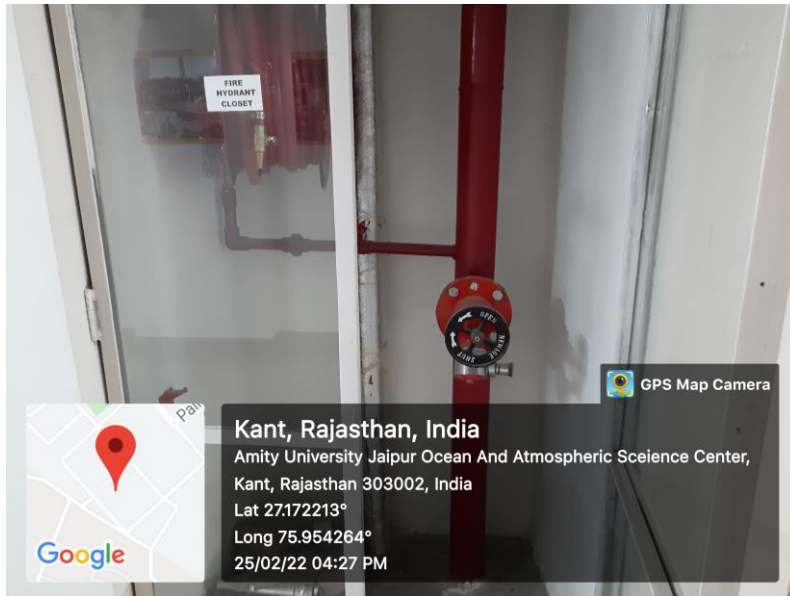
INFRASTRUCTURE: MAINTENANCE OF FIRE FIGHTING

The University has accorded **AMC** for all fire fighting maintenance.

Deputy Director along with his team oversees the maintenance of fire fighting facilities.

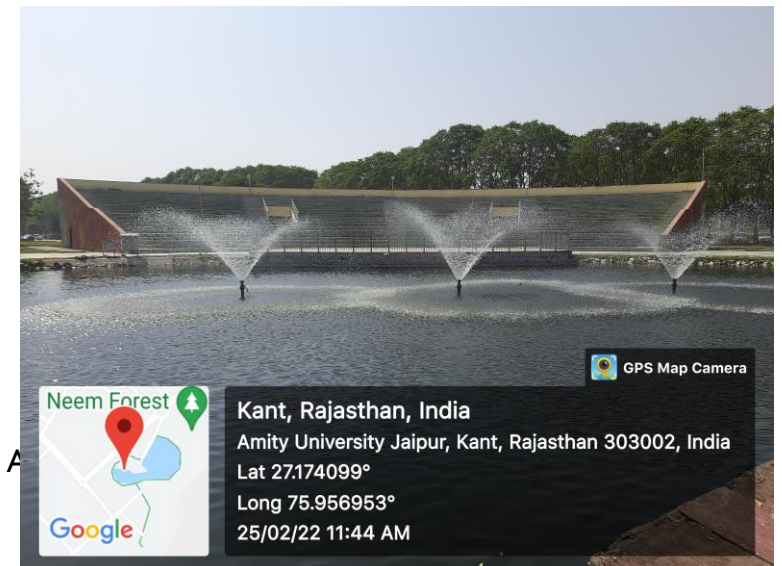
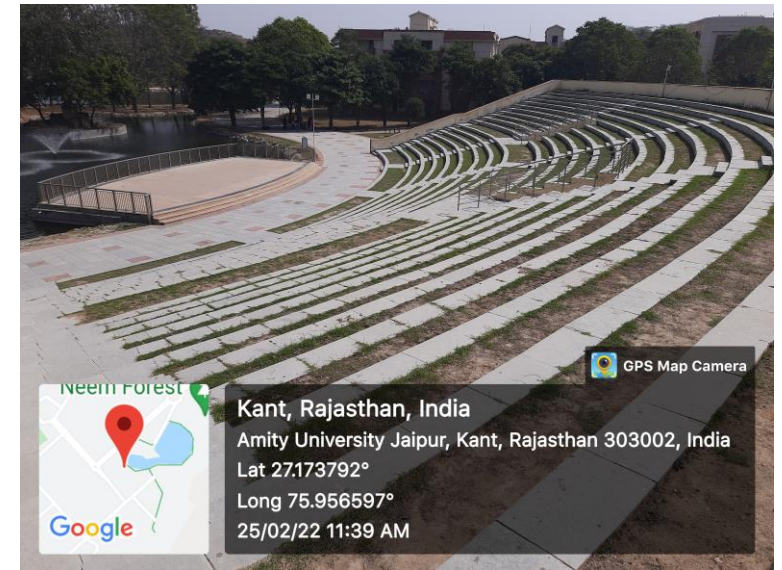
- **Fire Fighting**

- Fire Fighting Equipment installed in all buildings
- Training given to security, admin staff and earmarked personnel
- Periodic Emergency Evacuation Drills Carried Out



INFRASTRUCTURE: MAINTENANCE OF HORTICULTURE AND LANDSCAPE

- **Horticulture**
- **33 Horticulture staff available for landscaping and maintain flora / Fauna.**
- Lush green lawns with Palm Trees planted on the main drive way into the University.
- A neem-forest with a jogging track and research farm of Bamboo plantation on its campus in addition to 3000+ full grown up trees and flower plants of various species planted all over the campus.



INFRASTRUCTURE: MAINTENANCE OF TRANSPORT FACILITIES

OTHER FACILITIES

The University has accorded AMC for all Vehicles.

Deputy Director along with his team oversees the maintenance of transport facilities.

Transport

- AUR: Total 13 Vehicles (Bus + LVs) & 2 Golf Carts .
- Contract Buses are used for Students & Faculty/Staff from Jaipur City .
- School Transport Facility for Children of faculty / staff staying in campus.
- Buses Provided to Hostel Students on Saturdays to Visit Jaipur.

